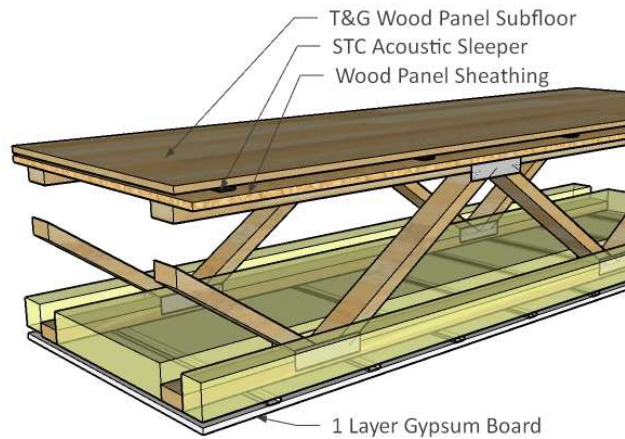




## STC Acoustic Sleeper™ Applications: Wood, Metal, Concrete

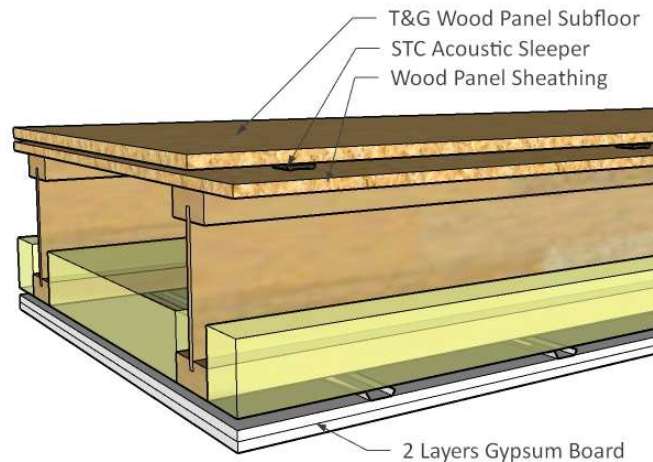
### WOOD TRUSSES

- 1-Hour UL Designs: L528, L563, L574
- 2-Hour UL Design: L577
- STC-59
- Hard Surface: IIC-54
- Carpet with Pad: IIC-72



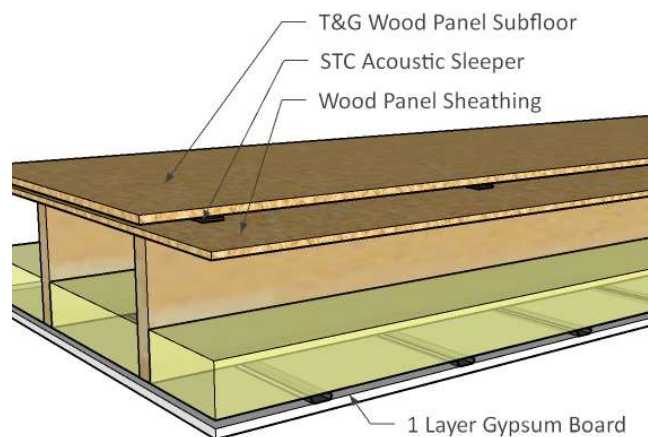
### I-JOISTS

- 1-Hour UL Designs: L589
- STC-61
- Hard Surface IIC-55
- Carpet with Pad: IIC-73



### WOOD JOISTS

- 1-Hour UL Designs: L502, L506, L514
- 2-Hour UL Design: L505
- STC-55
- Hard Surface: IIC-53
- Carpet with Pad: IIC-71

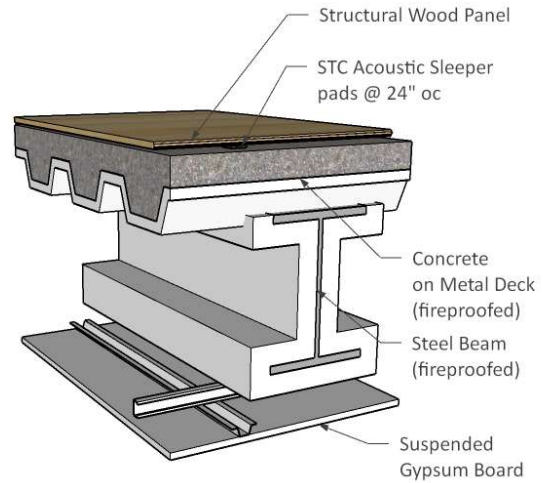
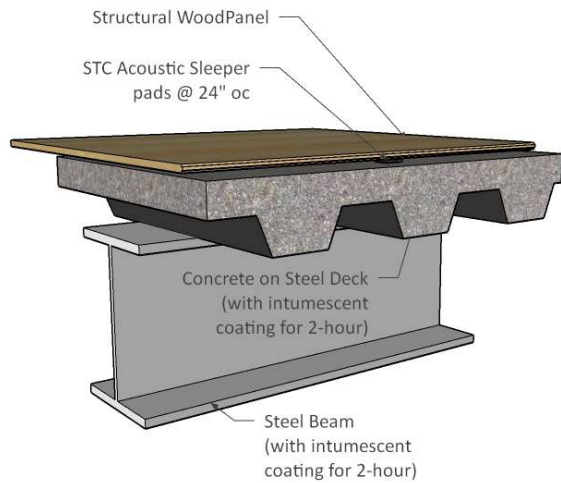




# STC SOUND CONTROL

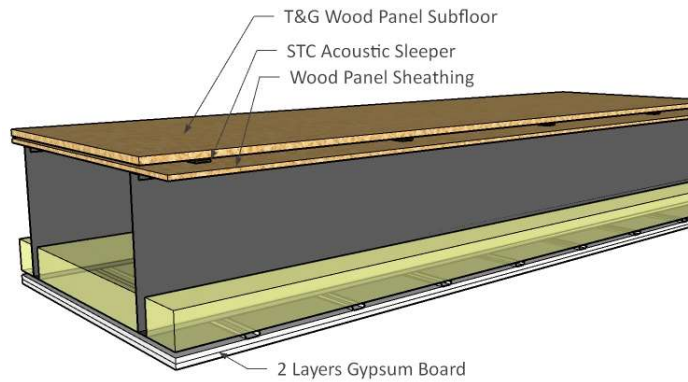
## CONCRETE

- 2-Hour UL Design: D902
- Without Ceiling: STC-51, Hard Surface IIC-51, Carpet and Pad IIC-69
- With Ceiling: STC-61, Hard Surface IIC-64, Carpet and Pad IIC-82



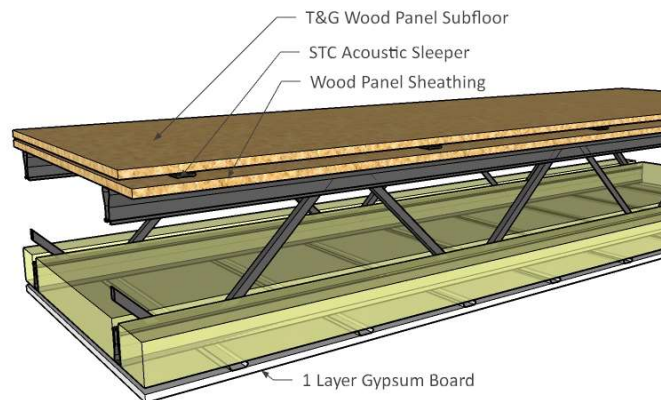
## METAL JOISTS

- 1-Hour UL Design: L524
- STC-61
- Hard Surface: IIC-54
- Carpet with Pad: IIC-69



## LIGHT GAUGE METAL TRUSSES

- 1-Hour UL Designs: L560, L565
- STC-61
- Hard Surface: IIC-54
- Carpet with Pad: IIC-69



May 21, 2019